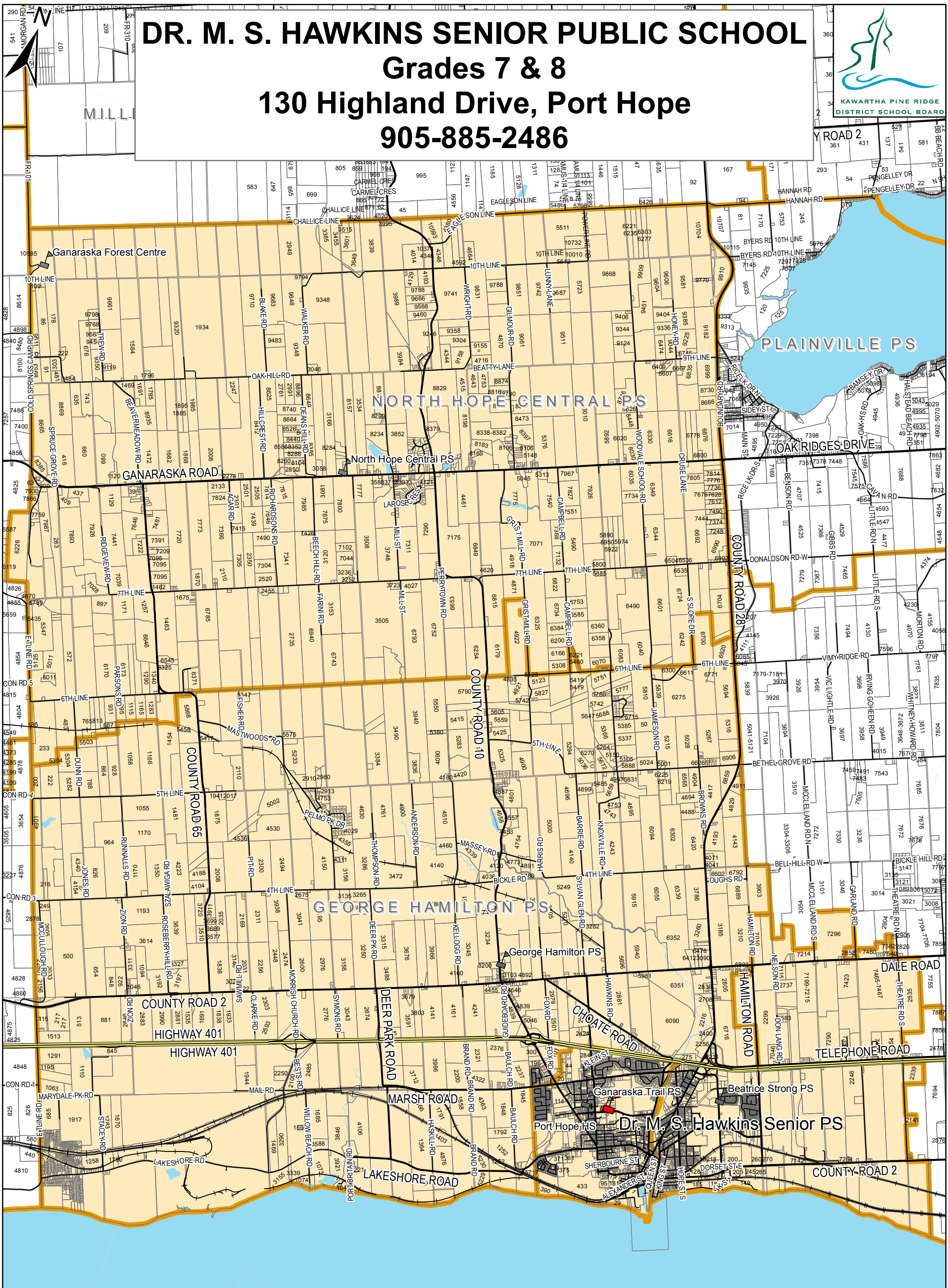
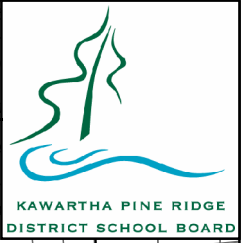


# DR. M. S. HAWKINS SENIOR PUBLIC SCHOOL

## Grades 7 & 8

### 130 Highland Drive, Port Hope

### 905-885-2486






**Disclaimer:**

All school boundaries are provided for general information and are illustrative only. Every effort has been made to ensure the accuracy of this information, however school boundaries can change over time. This map is not a legal survey. The Kawartha Pine Ridge District School Board (hereafter, the 'Board') does not assume any liability or responsibility for unintentional errors, accidental omissions or incomplete information. All final decisions with respect to school boundary maps are reserved to the Board.

This map was produced by and is owned by the Board and is not to be copied, saved, re-used or re-transmitted by any communication medium by anyone. This map was produced by the Board with data supplied under license by Members of the Ontario Geospatial Data Exchange.

© Her Majesty The Queen in right of Ontario by the Minister of Natural Resources as agent for the Ontario Ministry of Natural Resources.

### Legend

-  Lot Lines
-  School Boundaries
- Catchment Area**
-  DR. MS HAWKINS SENIOR PS